



Control Drive SE

Features

- High Durability SUS304 Construction
- Easy Maintenance
- Various Drive Power
- Manual Handle Equipped
- Changeable Characteristics by Angle of Cam



Specifications

| Series | Pneumatic Control Drive Unit SE Series |
|---------------------|-------------------------------------------------------------------------------|
| Construction | Totally-Enclosed Outdoor Type |
| Ambient Temperature | Standard: -10~50°C High Temp.: 0~100°C |
| Humidity | Less than 85 % (No Condensation) |
| Rated Specification | Continuous |
| Input Signal | Electric: DC 4~20 mA Pneumatic: 0.02~0.1 MPa (20~100 kPa) |
| Supply Pressure | 0.14~0.70MPa |
| Air Consumption | 11 NI/min (@ 0.4 MPa Supply Blanced) |
| Material | Standard: SUS304 Option: SS (Painting Colour Munsell 7.5 BG 6/1.5 Light Gray) |
| Hysteresis | 2% |
| Linearity | ±3% |
| Characteristic | Linear / Eq % / Reverse-Eq % |

* Hysteresis and Linearity depend on devices such as dampers, valves.

Notation Table

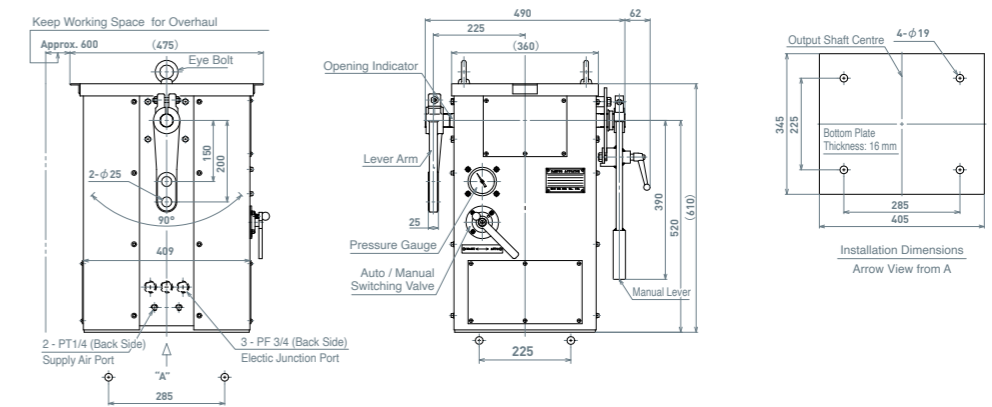
| Model | Rated Torque N-m (kgf-m) | | | Cylinder Dimensions (mm) | | | Body Weight (kg) |
|---------|--------------------------|--------------|--------------|--------------------------|-----------------|--------------|------------------|
| | Supply Pressure (MPa) | | | Piston | Diameter Stroke | Rod-Diameter | |
| 0.4 | 0.5 | 0.55 | | | | | |
| SE-01H | 123 (12.6) | 152 (15.5) | 167 (17.0) | φ100 | 100 | φ30 | 70 |
| SE-02H | 196 (20.0) | 245 (25.0) | 274 (28.0) | φ125 | 100 | φ36 | 80 |
| SE-05H | 323 (33.0) | 412 (42.0) | 451 (46.0) | φ160 | 100 | φ40 | 160 |
| SE-08H | 627 (64.0) | 784 (80.0) | 872 (89.0) | φ180 | 150 | φ45 | 190 |
| SE-15H | 1039 (106.0) | 1313 (134.0) | 1421 (145.0) | φ200 | 200 | φ50 | 280 |
| SE-25H | 1568 (160.0) | 1960 (200.0) | 2156 (220.0) | φ200 | 300 | φ50 | 380 |
| SE-40H | 2489 (254.0) | 3126 (319.0) | 3430 (350.0) | φ250 | 300 | φ60 | 440 |
| SE-60H | 4155 (424.0) | 5194 (530.0) | 5684 (580.0) | φ300 | 350 | φ70 | 620 |
| SE-80H | 5341 (545.0) | 6664 (680.0) | 7350 (750.0) | φ300 | 450 | φ70 | 720 |
| SE-100H | 6517 (664.5) | 8212 (837.4) | 9055 (923.4) | φ300 | 550 | φ70 | 820 |

Dimensions

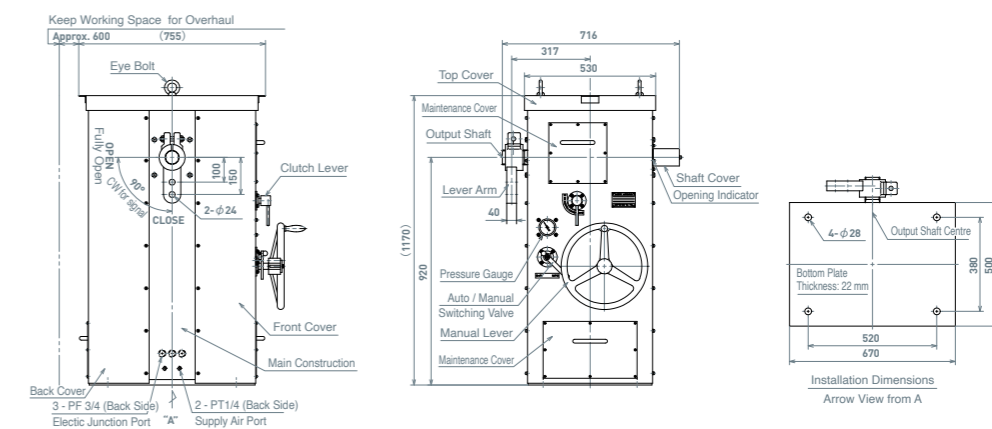
| Model | W | D | H | t | Model | W | D | H | t |
|--------|-----|-----|-----|----|---------|-----|------|------|----|
| SE-01H | 360 | 475 | 595 | 16 | SE-25H | 530 | 755 | 1170 | 22 |
| SE-02H | 360 | 475 | 610 | 16 | SE-40H | 545 | 805 | 1285 | 22 |
| SE-05H | 360 | 475 | 675 | 16 | SE-60H | 630 | 930 | 1495 | 25 |
| SE-08H | 420 | 560 | 860 | 19 | SE-80H | 650 | 1050 | 1700 | 25 |
| SE-15H | 460 | 620 | 964 | 19 | SE-100H | 700 | 1230 | 1960 | 25 |

* Excluding Projection Part.

Control Drive SE-02H



Control Drive SE-25H



Control Drive SE-60H

